

How regular COVID-19 testing can save companies' EBIT

The current pandemic situation

Growing number of Covid-19 cases

- Infected people are quarantined
- Close contacts (K1) are quarantined

Impact on companies

Some employees quarantined

Some employees are scared

- Productivity is reduced
- Strong negative impact on EBIT

Company needs

- Reduce the number of quarantined employees
- Offer a reassuring working environment

The solution: regular personnel monitoring

Companies must test all employees every 3 days.

Since the incubation period lasts 3 to 14 days, by performing regular testing, companies can quarantine infected individuals before they become infectious and endanger their colleagues (Figure 1). This not only stops the spread of the disease but also allows infected individuals to be treated very early. Thus, improving recovery. Furthermore, it becomes unnecessary for close contacts (K1) of the infected individual to undergo quarantine.



Figure 1 | Mass testing can stop the spread of COVID-19 by identifying infected persons before the onset of symptoms. TOP: In an individual testing scheme persons are tested when they already start to show symptoms. Their quarantine comes too late, since they could have already infected other people (family, colleagues, etc) when they did not yet show symptoms. BOTTOM: In contrast, regular mass testing identifies infected persons before the onset of symptoms but when they are already infectious. In many cases, these will also not show symptoms later on. Their quarantine not only prevents the spread of the infection but also enables an early treatment of the infected persons themselves, and extensive quarantine measures can be avoided.

Handling process for companies

The Lexogen NGS mass screening assay works with **non-invasive** and **painless** gargle samples. Employees can self-collect their sample at home by simply gargling a solution of water with a pinch of cooking salt (physiological saline) and spitting in a collection tube (Figure 2). Tubes are gathered by the employer (kept at room temperature) and then deposited in, or sent to a lab for analysis. Results are sent to the employer in approximately 16 hours after sample reception by the lab.

Do I need extra space or resources?

- No doctor/external person is required on-site
- No separate rooms for testing (and waiting) are needed
- No special equipment is needed
- Queues are avoided, thus minimizing contacts

What if I have a positive employee?

- Place employee in quarantine and call 1450
- Inform K1 and test them more frequently during the next few days

What are the benefits of implementing regular testing as a preventive measure?

1 – for the comfort and health of all employees

- Regular monitoring reduces the number of infected people and the death toll.
- Eliminates the necessity to quarantine close contacts (K1).
- Ensures a safe working environment.
- Reduces stress for employees.

2 – for the company

- More employees can continue to work; good morale is maintained.
- Companies stay up and running to ensure a continuous revenue stream.
- Reduces the dramatic negative impact of the pandemic on the EBIT of companies.

What are the benefits of implementing mass screening to follow-up infected people?

The period of quarantine could be managed more precisely and adapted to each individual. Infected people who are not infectious anymore could be **back to work** before the end of the current long quarantine period without endangering their colleagues or customers.

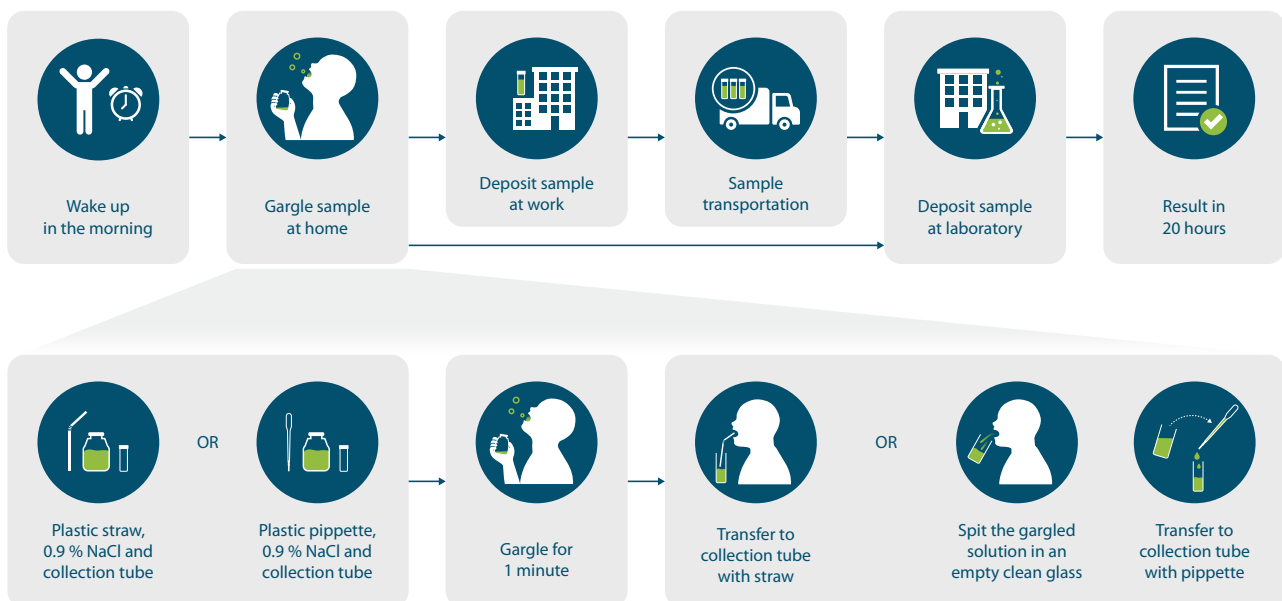


Figure 2 | Workflow of Lexogen's convenient over-night SARS-test: Gargle first thing in the morning and deposit the sample, e.g. at work. The samples are then transferred to a laboratory for analysis with results provided in time before the start of the next work day. The gargling solution can be transferred to the collection tube by using a straw or by first spitting into a clean glass and subsequent pipetting.